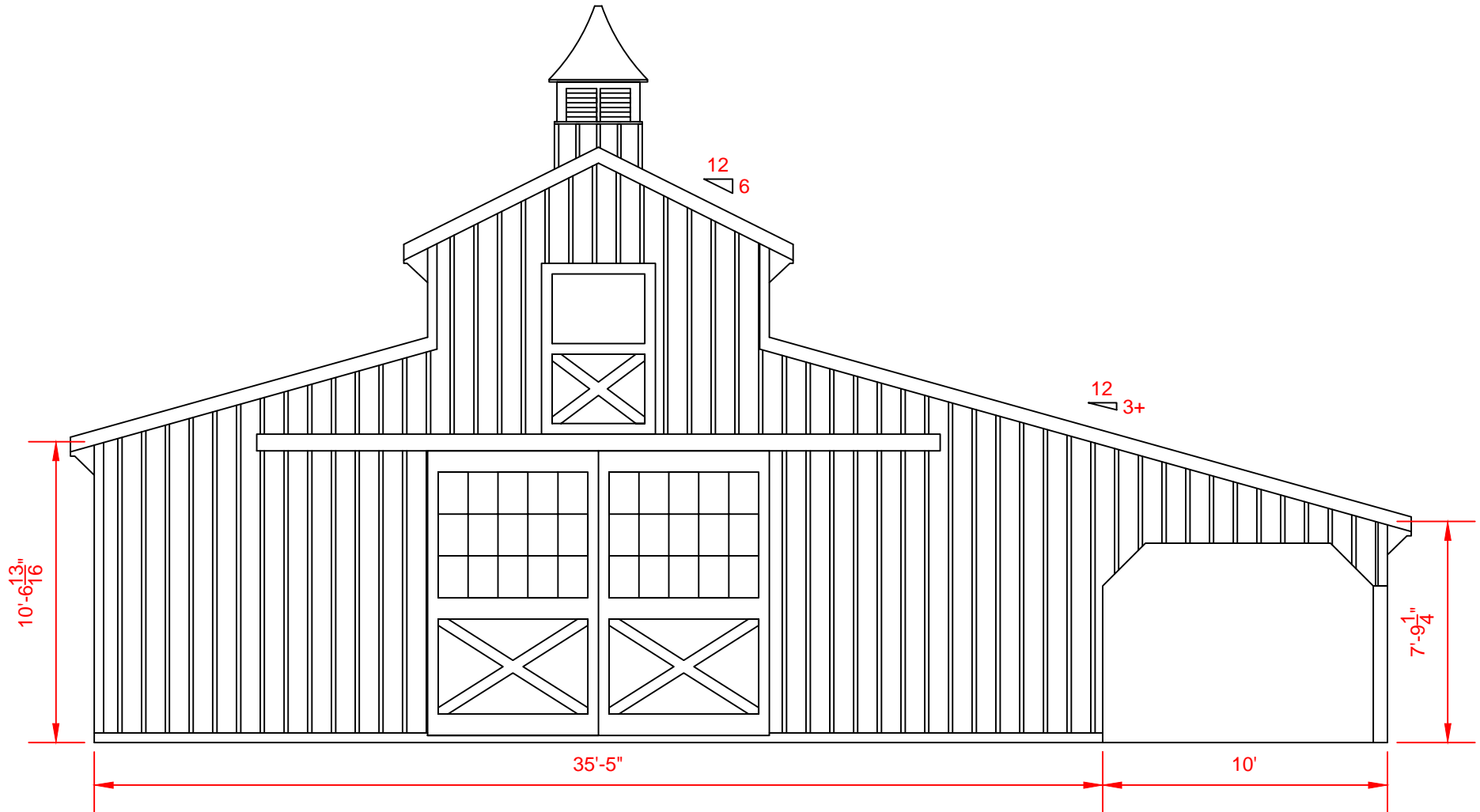


36x36 Monitor Horse Barn with 10' Lean To



2
A.1

FRONT ELEVATION

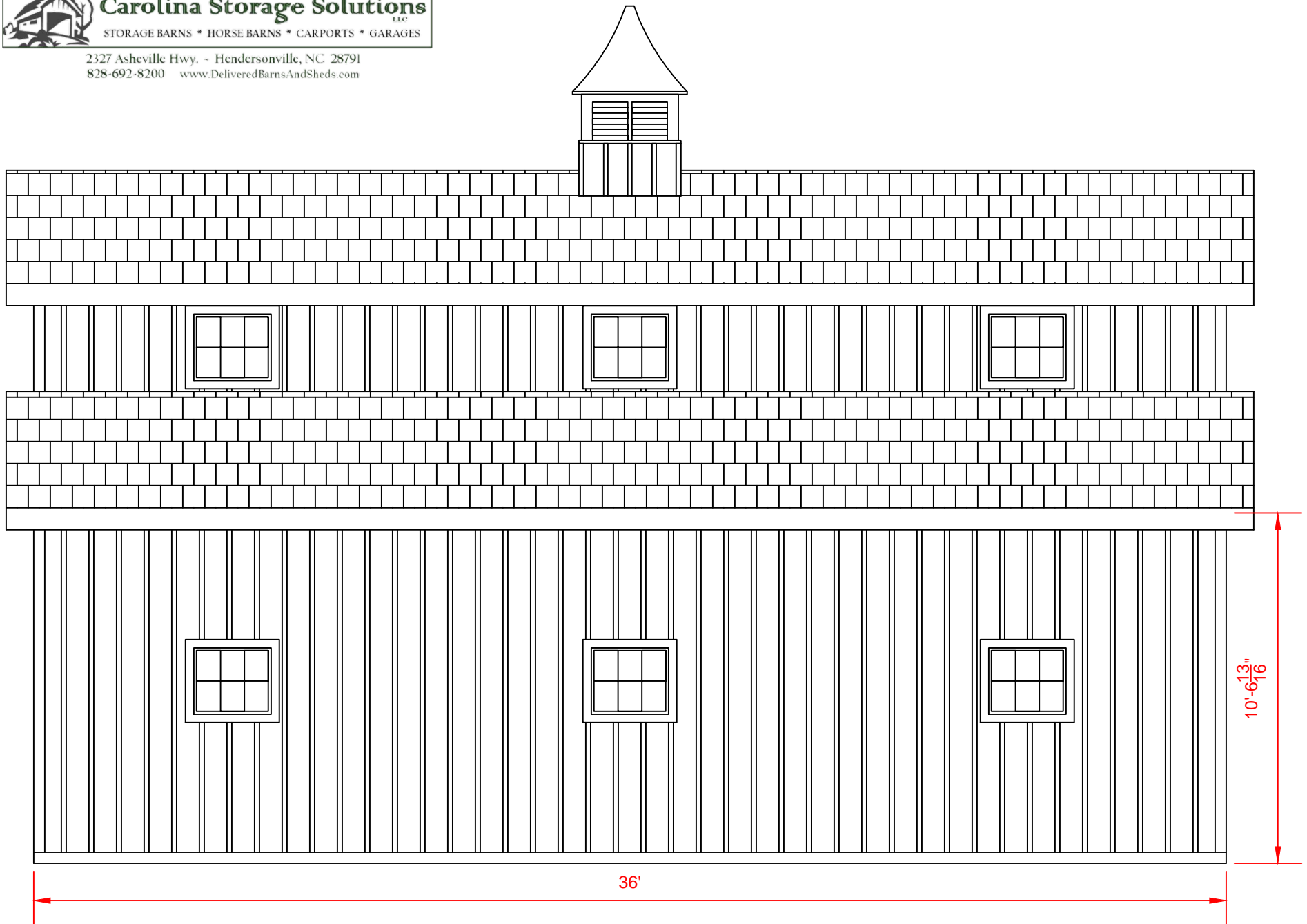
Scale: ³/₁₆" = 1'-0"



Carolina Storage Solutions
LLC

STORAGE BARNs * HORSE BARNs * CARPORTS * GARAGES

2327 Asheville Hwy. - Hendersonville, NC 28791
828-692-8200 www.DeliveredBarnsAndSheds.com



4
A.1

LEFT ELEVATION

Scale: $\frac{3}{16}$ " = 1'-0"

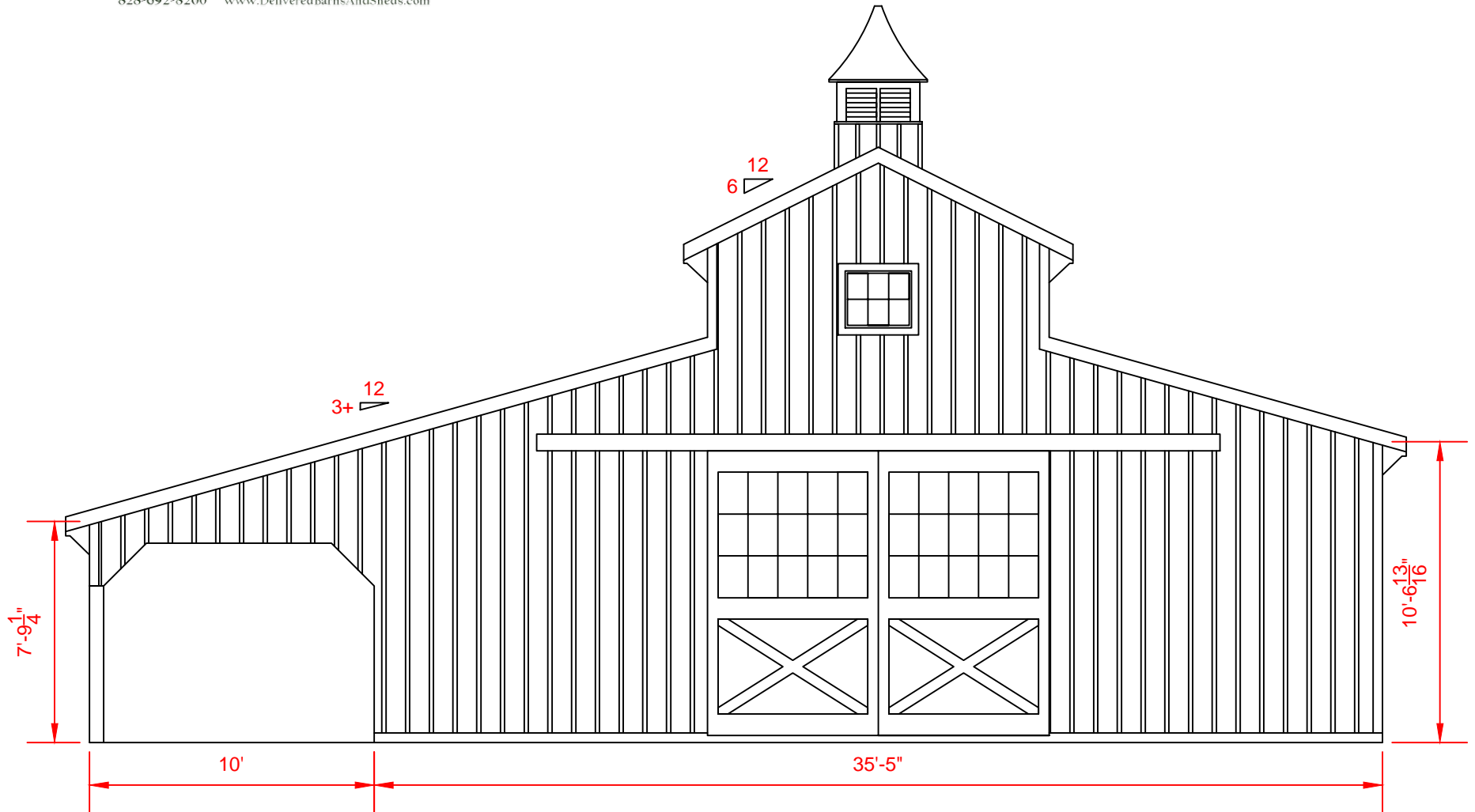


Carolina Storage Solutions
LLC

STORAGE BARNs * HORSE BARNs * CARPORTS * GARAGES

2327 Asheville Hwy. - Hendersonville, NC 28791

828-692-8200 www.DeliveredBarnsAndSheds.com



5
A.1

REAR ELEVATION

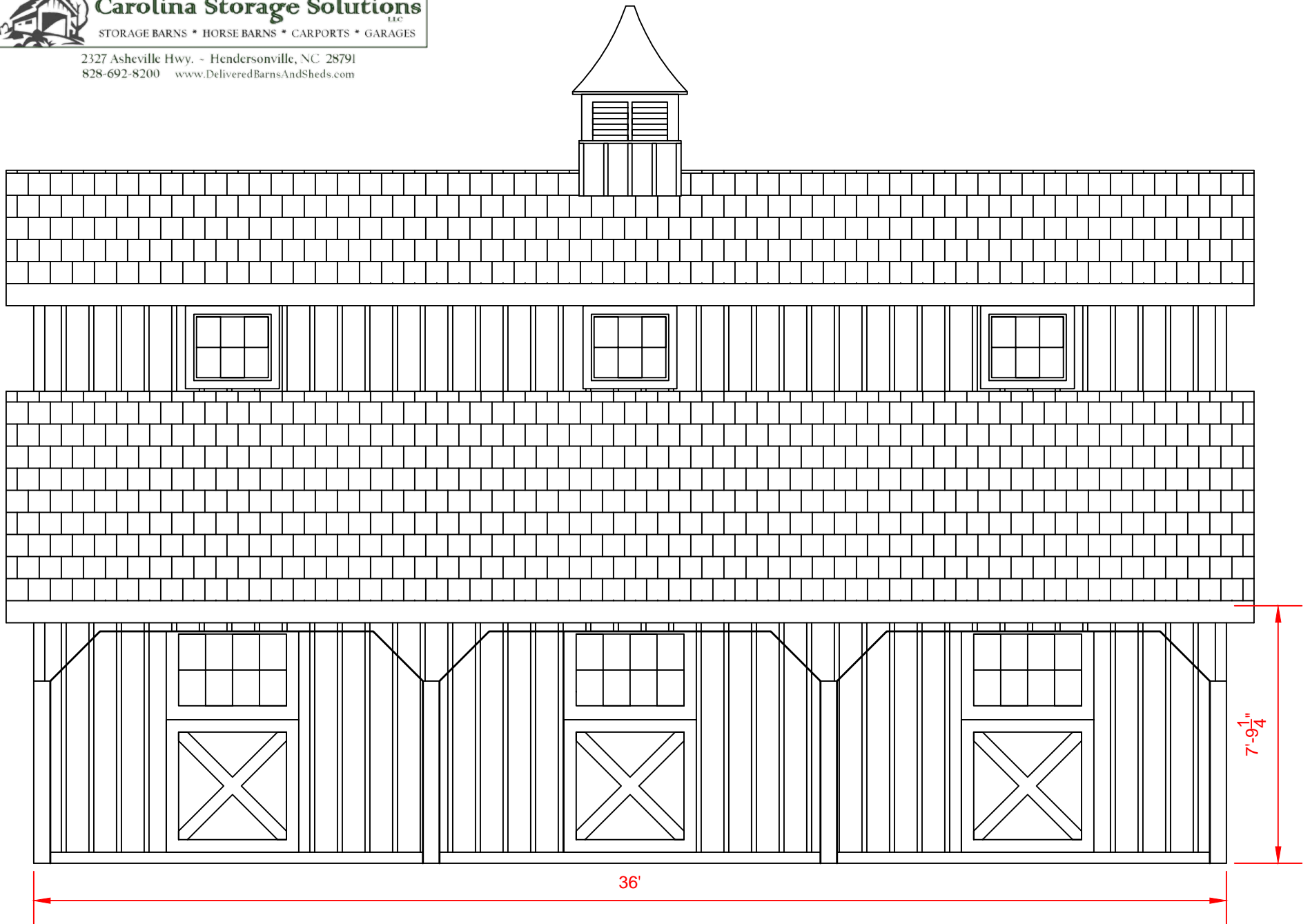
Scale: $\frac{3}{16}" = 1'-0"$



Carolina Storage Solutions
LLC

STORAGE BARNs * HORSE BARNs * CARPORTS * GARAGES

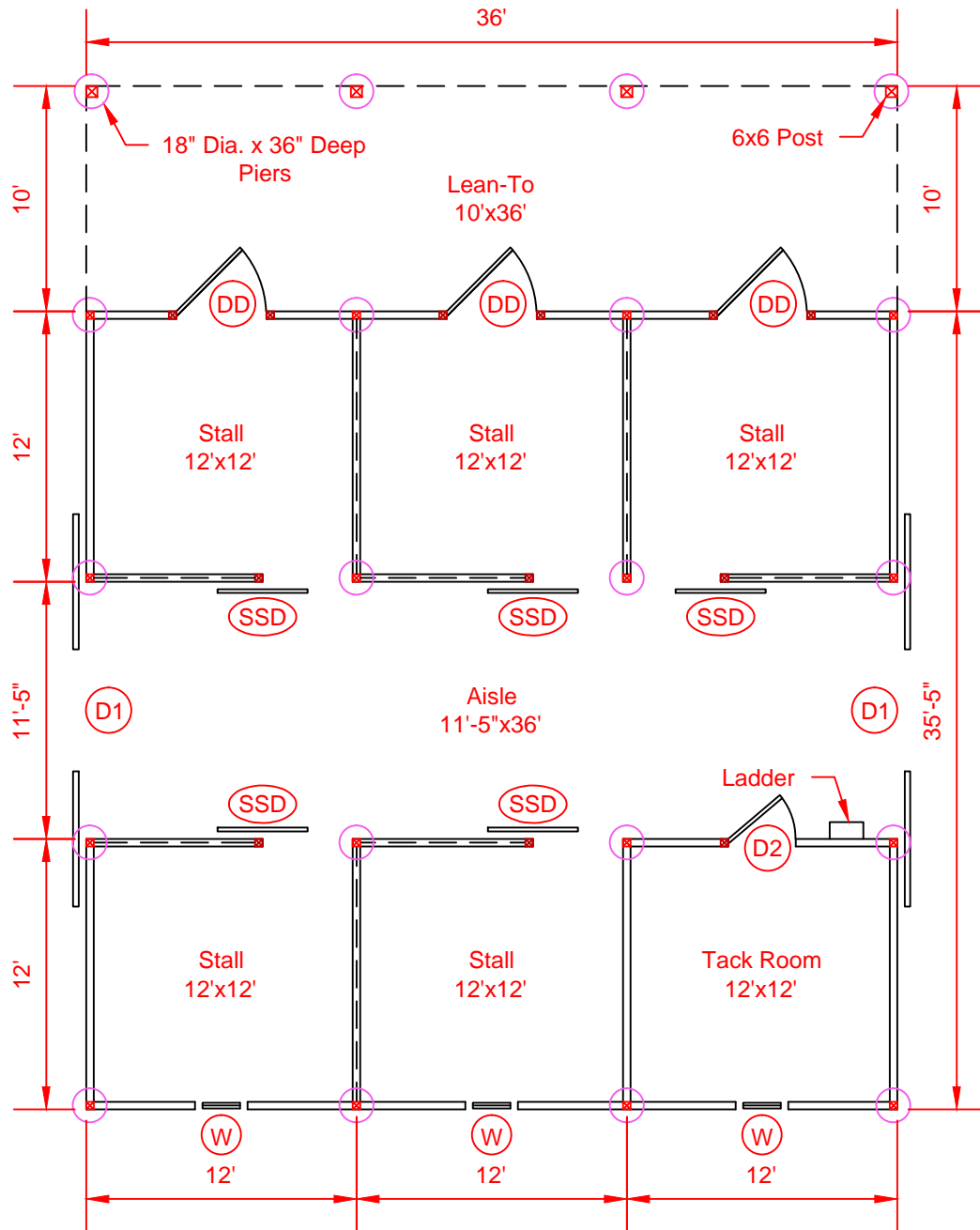
2327 Asheville Hwy. - Hendersonville, NC 28791
828-692-8200 www.DeliveredBarnsAndSheds.com



3
A.1

RIGHT ELEVATION

Scale: $\frac{3}{16}'' = 1'-0''$



Symbol Legend

- (W) = 28"x24" Slider Window
- (DD) = 4'x7' Dutch Door with Window
- (D1) = (2) 6'x10' Sliding Doors with Windows
- (D2) = 36"x80" Service Door
- (SSD) = 4'x7' Sliding Stall Door



1
A.1

FLOOR PLAN
Scale: 1/8" = 1'-0"



Carolina Storage Solutions
LLC

STORAGE BARNs * HORSE BARNs * CARPORTS * GARAGES

2327 Asheville Hwy. - Hendersonville, NC 28791
828-692-8200 www.DeliveredBarnsAndSheds.com