

Quality Horse Barns



CUSTOM BUILT ▲ GARAGES ▲ RUN-IN BARNs ▲ STORAGE BARNs ▲ MODULAR BARNs ▲ CHICKEN COOPs ▲ SHED-ROW BARNs

White Pine Run-In Sheds



10' x 18'
with Keystone Stain



10' x 12'



10' x 16'
Painted Red T1-II Siding
with Tan Trim

10' x 18'
with Optional Stall



12' x 24'
Painted Tan T1-II Siding

12' x 24'
Painted Red with Black Trim



12' x 30'



White Pine Shed Barns



12' x 32'
Painted Clay with Red Trim



10' x 24'
Painted Clay with Tan Trim



10' x 30'



12' x 24'
Clay T1-II Siding with White Trim



10' x 36'
Optional 4' Overhang
with Keystone Gold Stain

White Storage Sheds



10' x 14' Manor Style
Painted Red with Black Trim



10' x 14' Cottage Style
with Cedar Stain



6' x 8' Cape Style
Painted Grey with White Trim



10' x 16' Hudson Style
with Cedar Stain and Cupola

10' x 30' Manor Style
with Gable Vent, Optional Service Door
with Window and Two Additional Windows



12' x 20' Cape Style
Painted Grey with Blue Trim
with Optional Transom Windows



Lean-To Buildings



10' x 24' Run-In Shed
with Optional Hinged 8' Overhang and
Drop Vent



Depicted Without Lean-To



10' x 32' Building
with Optional Metal Roof



12' x 32' Horse Barn
Painted Red with Tan Trim with Optional Hinged 8' Overhang, Service
Door with Window, Cupola,
Weather Vane and Gambrel Vent

STEP THREE

Depicted With Optional Hinged Lean-To



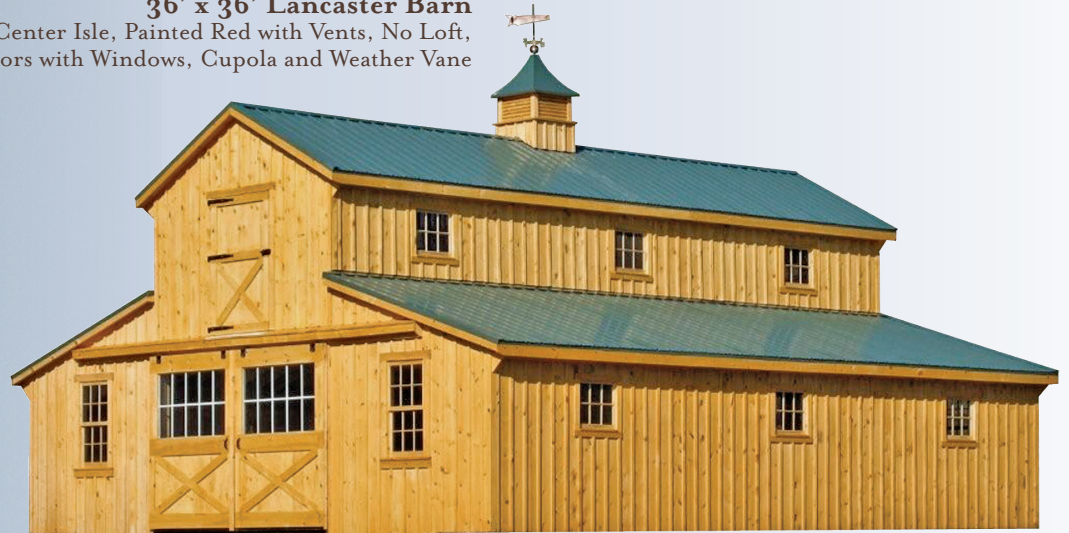
STEP TWO

STEP ONE

White Pine Modular Barns



36' x 36' Lancaster Barn
High Center Isle, Painted Red with Vents, No Loft,
Dutch Doors with Windows, Cupola and Weather Vane



30' x 36' Monitor Barn
with 8' Lean-To, Metal Roof, Window in Roll
Doors, Double Hung Windows, Dutch Doors
with Windows, Cupola and Weather Vane



36' x 24' Trail Side Barn
Four Pitch Roof, Optional Tan Paint and Blue
Trim, Double Hung Windows and Dutch Doors
with Window

White Pine Modular Barns

36' x 50' High County Barn
with Eight Pitch A-Frame, Optional Clay Paint with Red Trim and Hayloft. Optional Pewter Grey Shingle Roof, Windows in Sliding Doors, Service Door, Cupola with Window, Double Hung Windows, Dutch Doors with Window



30' x 60' High County Barn
with 8' Lean-To, Pent Roof Over Center Aisle Doors, Two Dormers with Arched Windows, A-Frame Entrance with Exposed beams, Custom 8' Cupola with Glass Extended Roof Peaks



Wood Sheds and Chicken Coop



6' x 12' Shed
with Natural Stain and Green Metal Roof



6' x 8' Shed
with Cedar Stain



4' x 8' Shed
with Clay Paint and Tan Trim



6' x 8' Shed
with Green Metal Roof

Garages



24' x 24' Garage
with Loft and Optional Homestead Garage Doors,
Painted Clay with Tan Trim, 8' Pitch Roof, 30" x
40" Windows, Loft Door with Transom Window, LP
Cedar Impression Painted Red



12' x 24' Elite Style Garage
with Optional Homestead Garage Door,
Painted Tan with Brown Trim



24' x 26' x 9' Double Wide Garage
with 8 Pitch Roof and Cedar Stain



24' x 24' Garage
with Cedar Stain

Hinged Roof Buildings



12' x 16' White River Shed
with 12 Pitch Hinged Roof, Clay Paint and Tan Trim



12' x 24' White River Garage
with 12 Pitch Hinged Roof, Tan Paint and Green Trim

Options



Glue LAM LVL Header
for Increased Snow Loads
and for Hurricane Regions



Brackets for Hurricane Regions



Chew Guard



Grille
with Hay Rack and Feed Hole



Gable Vent



Drop Vents



Color Options

Stain Colors



Mushroom



Cedar



Keystone Gold

Metal Roof and Siding Colors



Tan



Brown



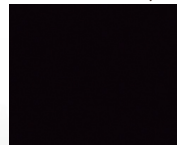
Pewter Grey



Brown



Red



Black



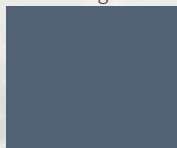
Beige



Charcoal



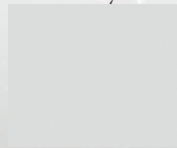
Clay



Tan



Evergreen

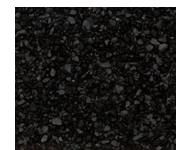


White

Shingle Colors



Weathered Wood



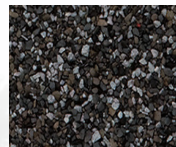
Charcoal



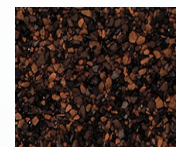
Snakewood



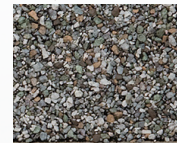
Hunter Green



Pewter Grey



Hickory



Fox Hollow Grey

Paint Colors



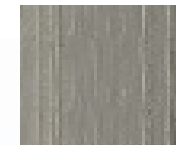
White



Blue



Grey



Clay



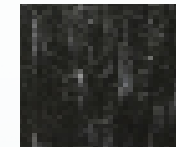
Red



Green



Tan



Black



Brown

Colors May Vary from Samples



**Carolina
Storage
Solutions**

www.DeliveredBarnsAndSheds.com